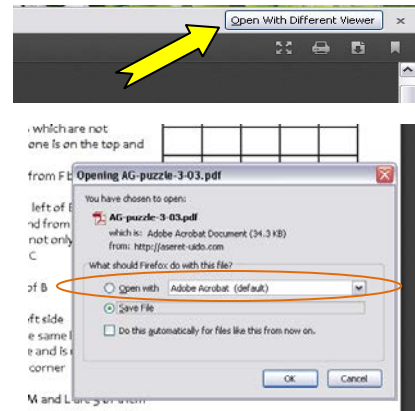


The PDF should allow you to add letters in the table on the right.

If you do not see the form fields, look at the top right corner of the PDF page and click “Open With Different Viewer”.



Then choose Adobe Acrobat (default). The form PDF should pop up.

Or just print the page and work with a pencil...

AG puzzle 2-14 - Painless - Reasonable - Challenging - **Extreme**

- A is immediately above D and under Q
- B is in the fourth row
- C is in the fourth row immediately next to Y
- D is has eight neighbors in same column as M
- E in the same row<sup>3</sup> as H but does not touch it
- F is under L and above H but only touches one of them
- G is immediately above R
- H has 3 neighbors and is opposite to X
- I is on the same line as U
- J is somewhere above M without touching it
- K is one of the 3 neighbors of X
- L is immediately left of W
- M has 5 neighbors on the same line as R
- N is immediately under W
- O is immediately next to D
- P has 5 neighbors and is in the last row next to H
- Q is equidistant from two corners and next to W
- R has very few friends
- S is separated from U by 3 spaces
- T is immediately next to Y and under I
- U is the first in its row
- V is immediately left of K
- W is in the same row as X
- X is separated from G by 2 spaces
- Y has 8 neighbors
